

Astrometría pre-Gaia de la Corona de Cúmulos Abiertos

Lola Balaguer Núñez (UB)

Carme Jordi (UB)

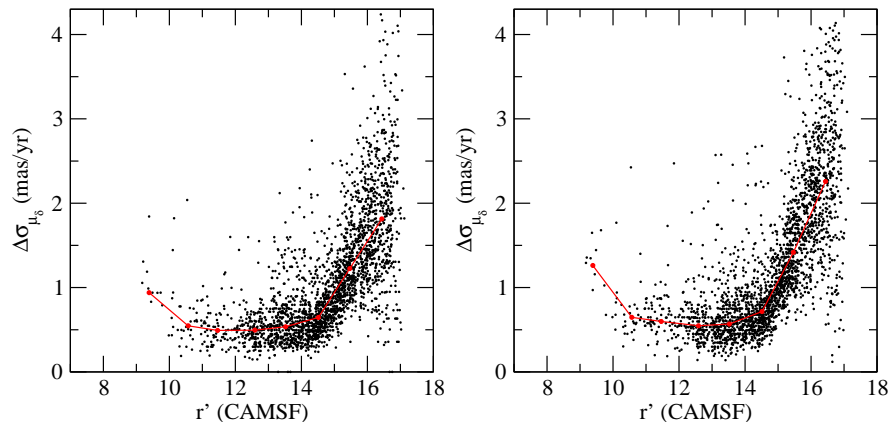
Jose Luis Muiños (ROA)

Eduard Masana (UB)

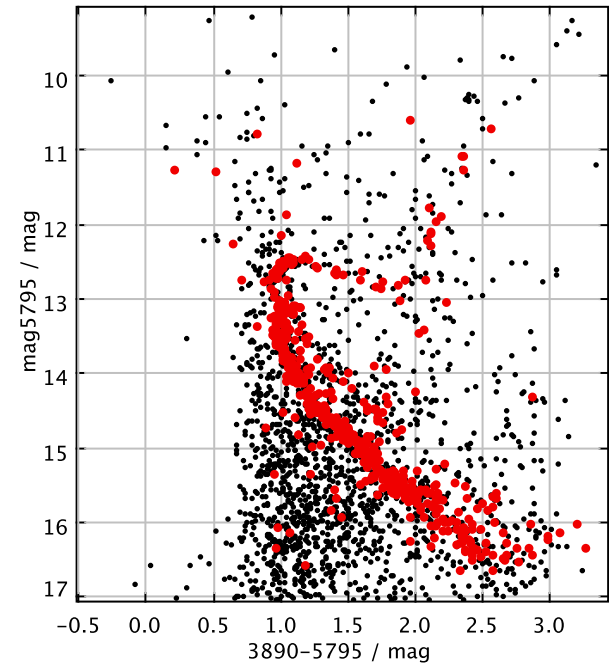
David Galadí Enríquez (CAHA)

New Membership Study on the Corona of the Open Cluster M67

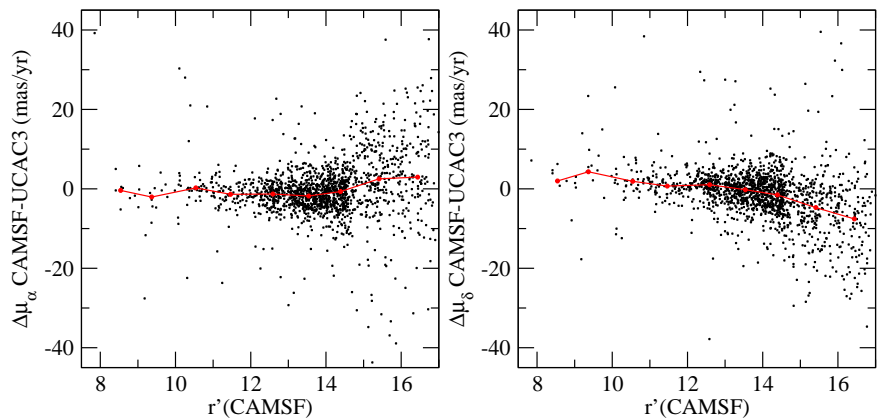
- Meridian Circle of San Fernando CMASF at El Leoncito (Argentina).
- first epoch data from plates POSSI (1951.9)
- second epoch CMC14 (2001)



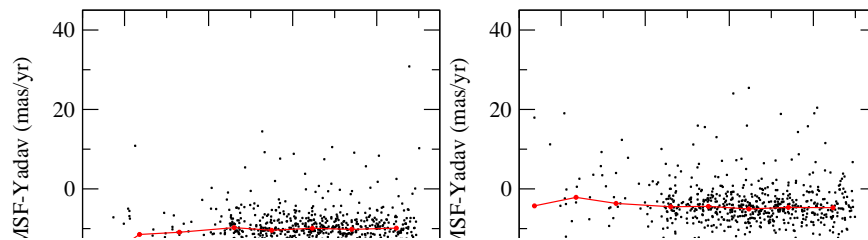
with 3 epoch positions (POSSI, 1951.9; CMC14, 2001; CMASF, 2010.2).. Red lines correspond to the median over intervals of magnitude.



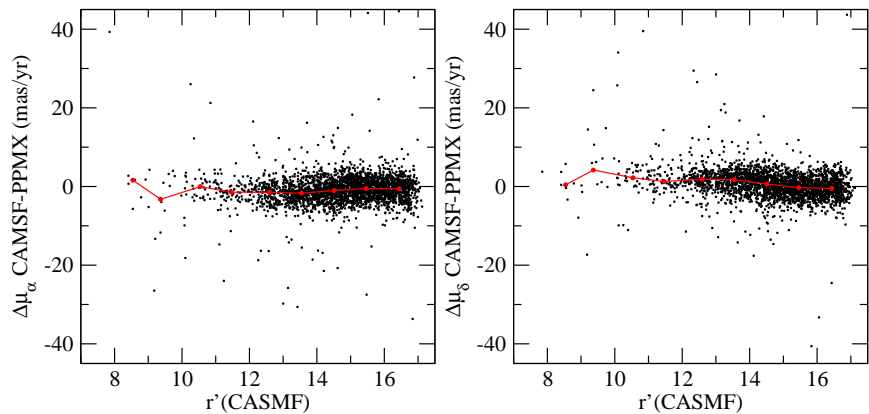
proper motions of 2738 stars
 57 probable member stars in red,
 => up to a distance 0.96°
 => $(\mu_{\alpha\cos\delta}, \mu_{\delta}) =$
 $(-9.9 \pm 0.2, -4.6 \pm 0.2) \text{ mas yr}^{-1}$



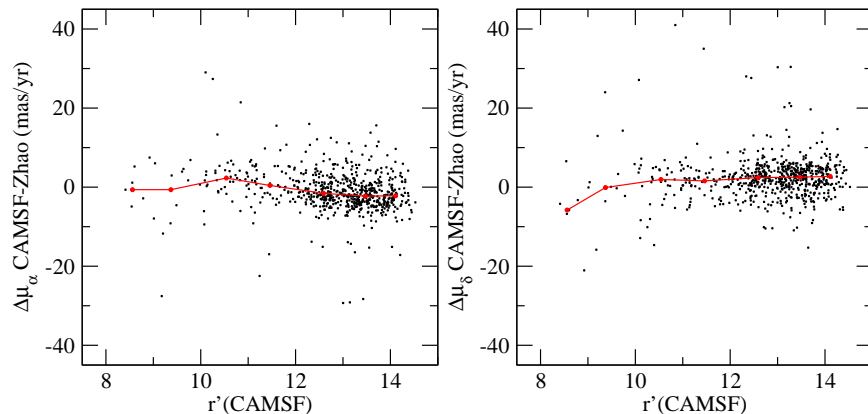
UCAC3. Zacharias et al. 2010



Yadav et al. 2008



PPMXL Roeser et al. 2008



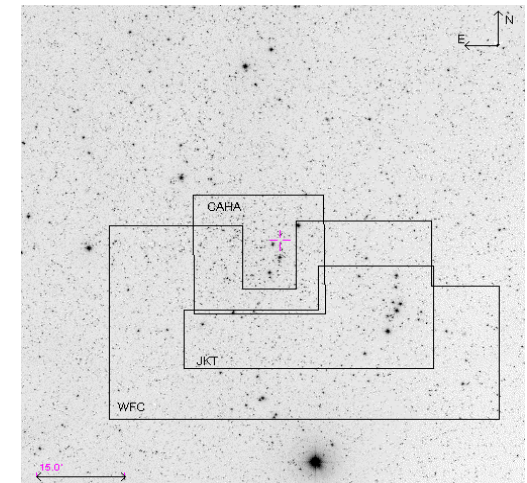
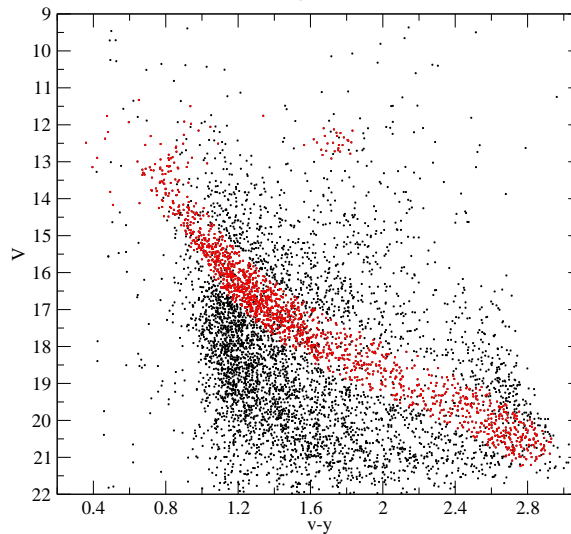
Zhao et al. 1993

Work in progress

- Meridian Circle of San Fernando CMASF at El Leoncito (Argentina)
- Meridian Circle of La Palma

Selection of clusters In coordination with Gaia ESO Survey for future Campaigns (P89, P90...).

NGC1817 (P90?)



Already obtained data (non complete) in La Palma for clusters:

IC 4665

NGC 6530

Berkeley 44

NGC 6633

NGC 6704

Blanco 1