

Estrellas OB en Gaia DR2: conocidas y desconocidas

Jesús Maíz Apellániz y Michelangelo Pantaleoni González
(+ Danny Lennon + Rodolfo H. Barbá et al.)

CAB, CSIC-INTA

Barcelona, martes 29 de mayo de 2018

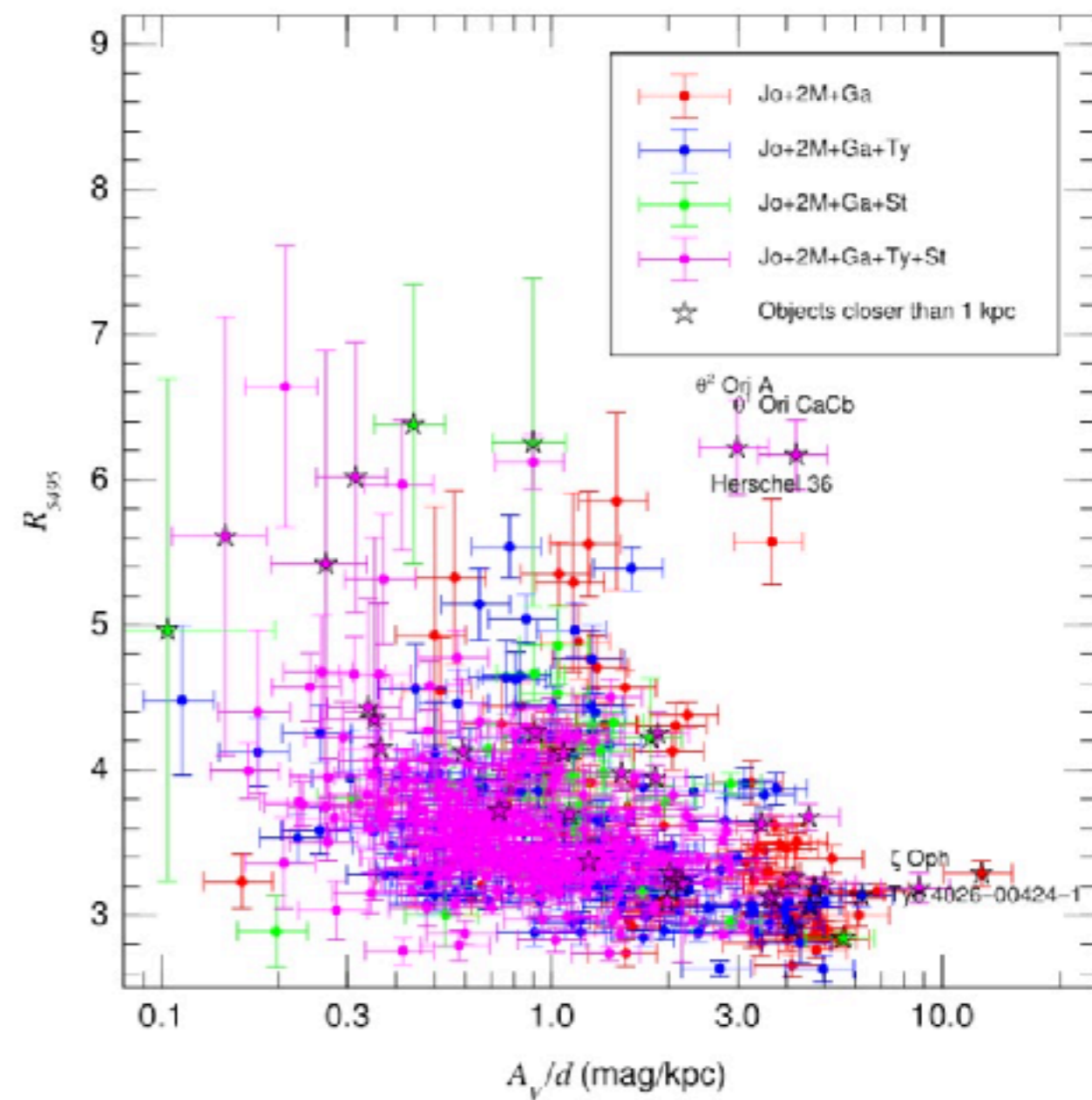
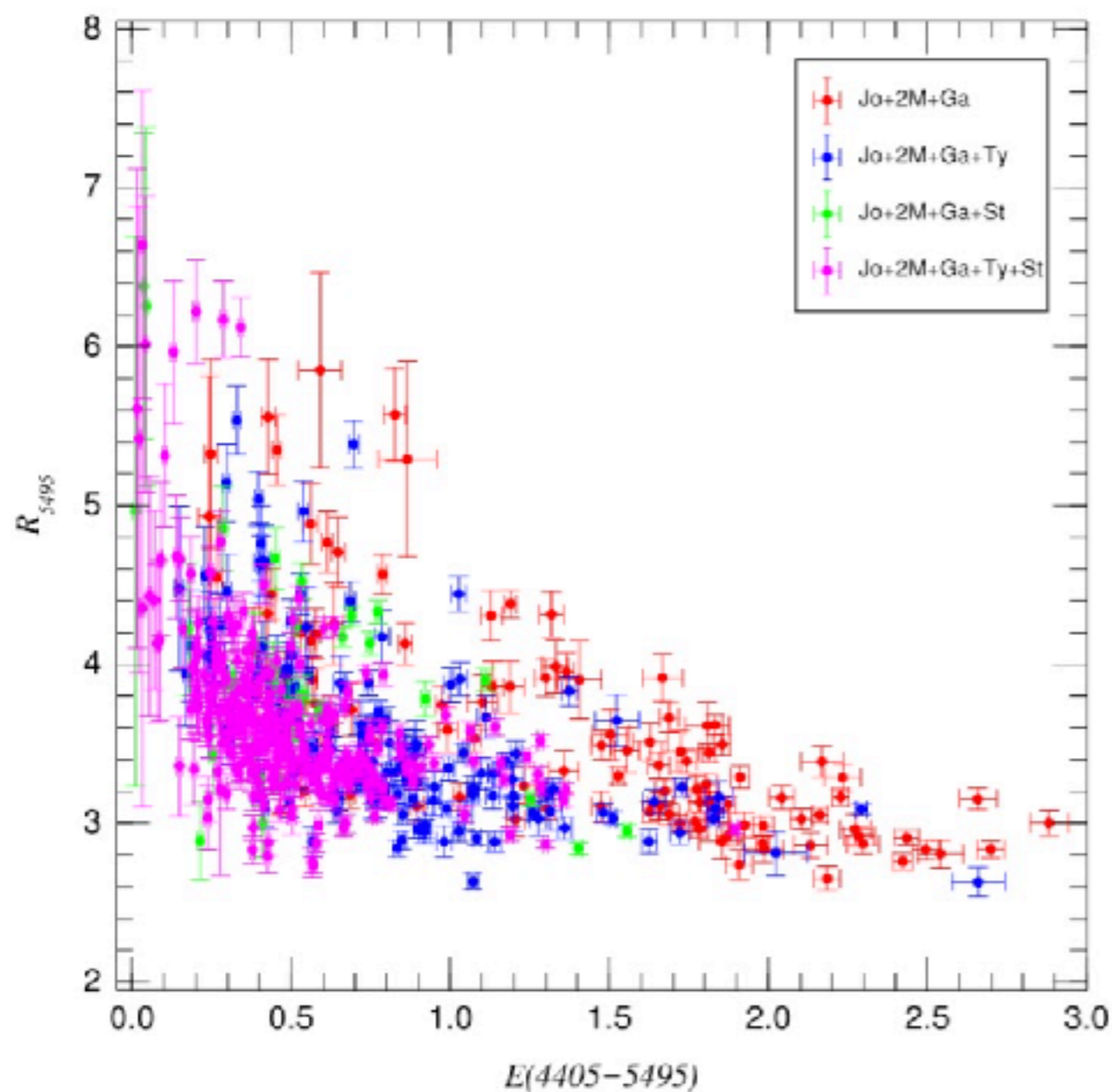
Líneas de investigación

- Distancias a estrellas O (+B+WR) conocidas.
- Buscando nuevas estrellas OB (extinguidas).
- Las leyes y la distribución de extinción en la Galaxia:
<http://adsabs.harvard.edu/abs/2018A&A...613A...9M> .
- Las estrellas OB en 6-D: distribución de velocidades y estrellas fugitivas:
<http://adsabs.harvard.edu/abs/2018arXiv180406915M> .
- Binarias visuales masivas.
- Gaia y GALANTE.

Estrellas O: extinción y paralajes espectroscópicas

- <http://adsabs.harvard.edu/abs/2018A&A...613A...9M> .
- 562 estrellas O de GOSSS:
 - ★ Clasificaciones espectrales.
 - ★ Cantidad de extinción: $E(4405-5495)$.
 - ★ Tipo de extinción: R_{5495} .
 - ★ Paralajes espectroscópicas.

Estrellas O: extinción y paralajes espectroscópicas



Estrellas O: extinción y paralajes espectroscópicas

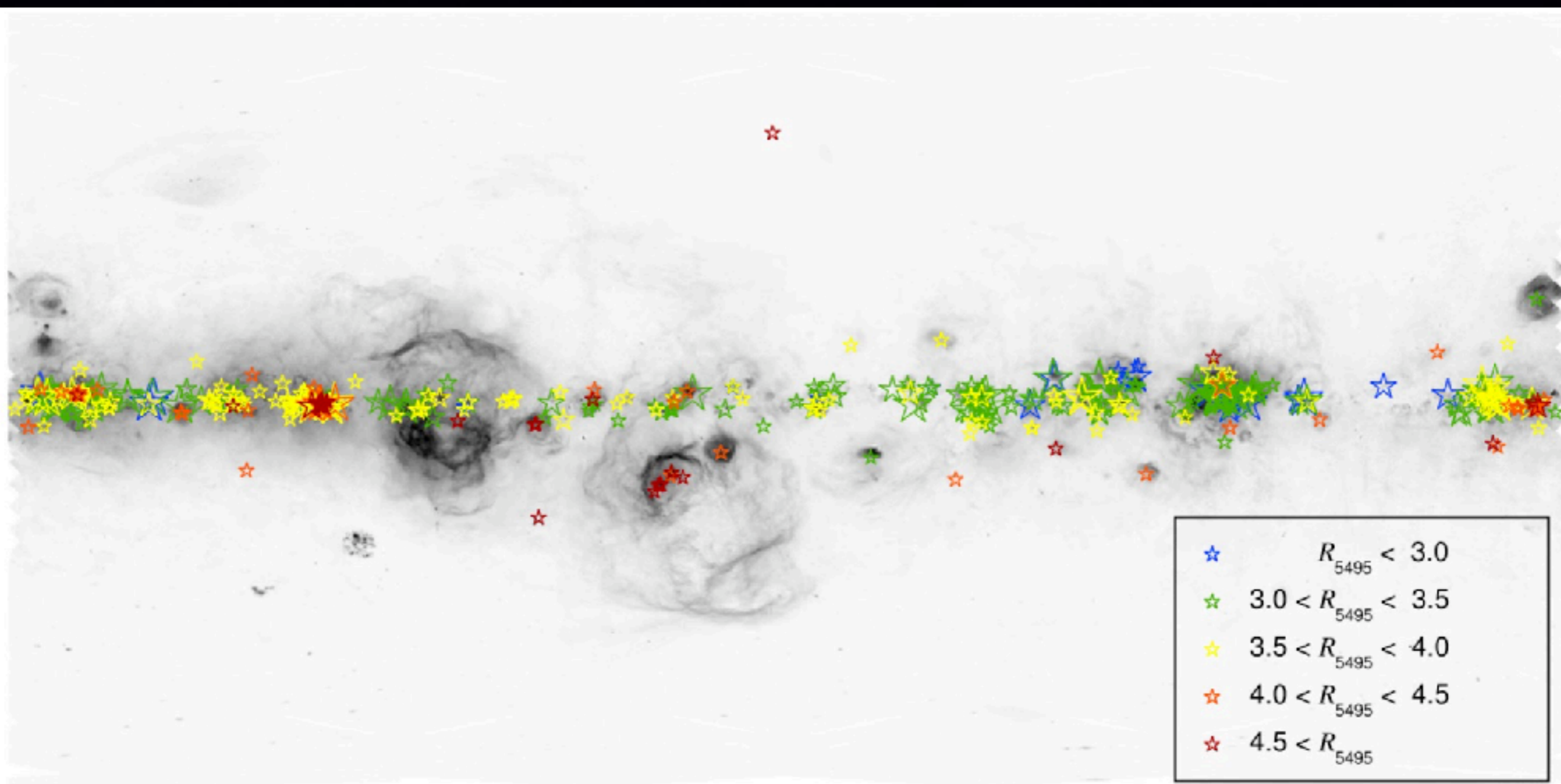
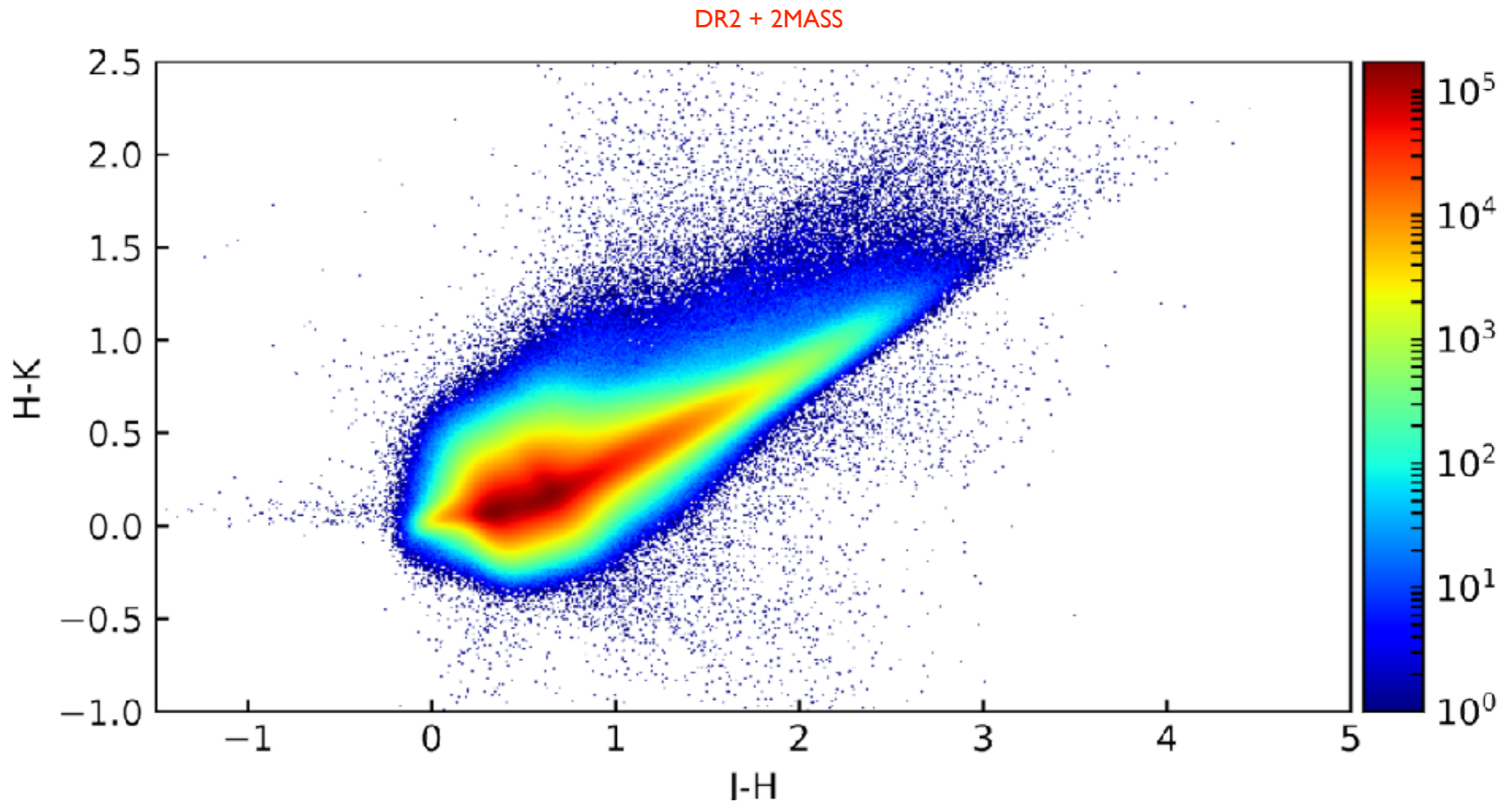


Fig. 12. Extinction measurements for Galactic O stars plotted on top of the full-sky $H\alpha$ image of [Finkbeiner \(2003\)](#). Different colors are used for five ranges of R_{5495} with the size of the symbol increasing with $E(4405 - 5495)$. The background image is showed in a logarithmic intensity scale and in Galactic coordinates with a Cartesian projection centered on the Galactic anticenter.

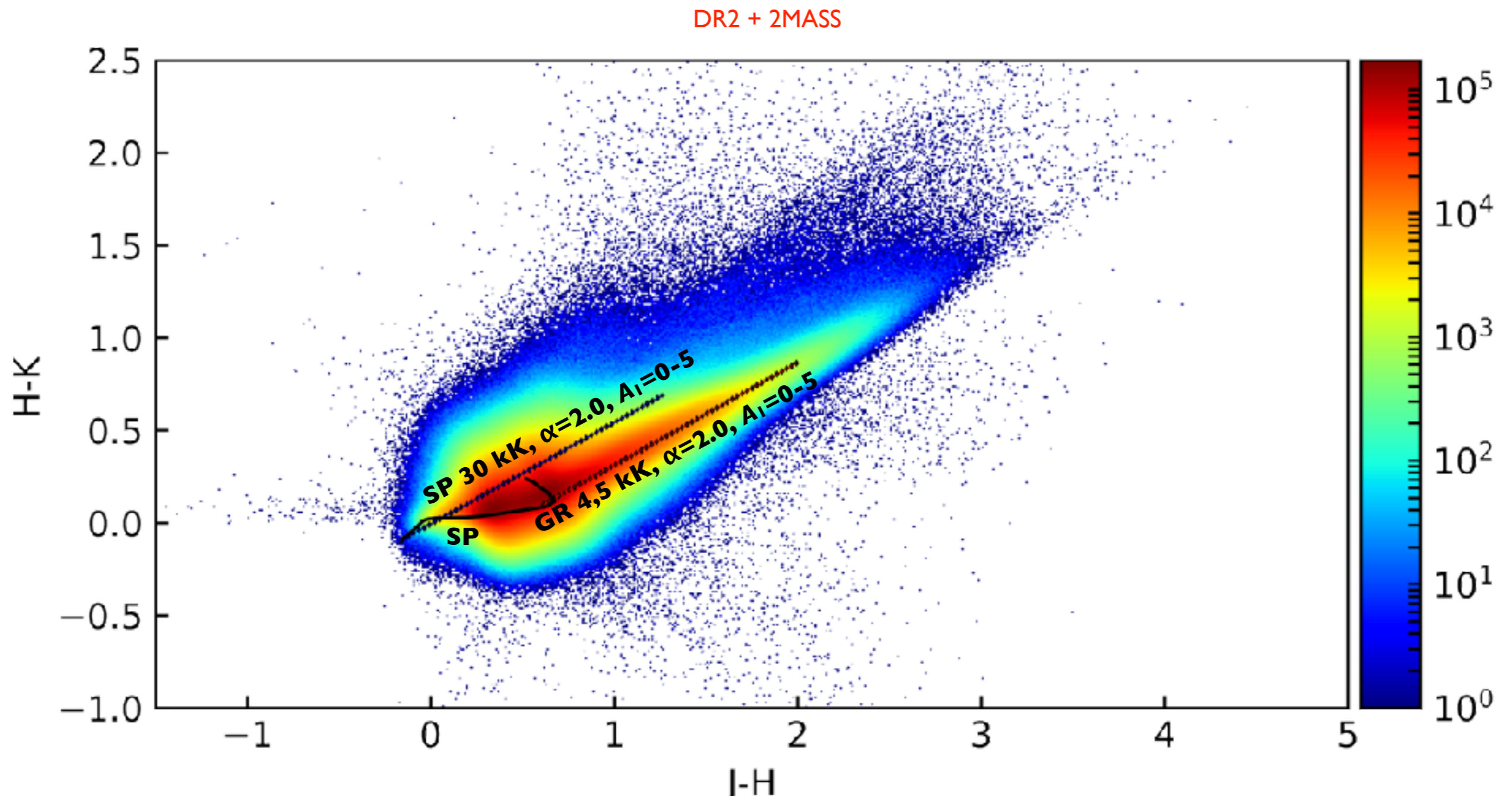
Combinando Gaia DR2 y 2MASS

Muestra	Total	$ b < 10^\circ$	$ b > 10^\circ$
2MASS total	470 992 970		
Calidad fotométrica AAA	192 915 439		
Cruzado con DR2 (incluyendo Ducati)	182 201 785		
$K' < 9$ [$K' = K - 1,4((H-K)+0,05)$]	4 900 136	3 839 808	1 060 328
Corte en $J-H + H-K$	462 018	297 128	164 890

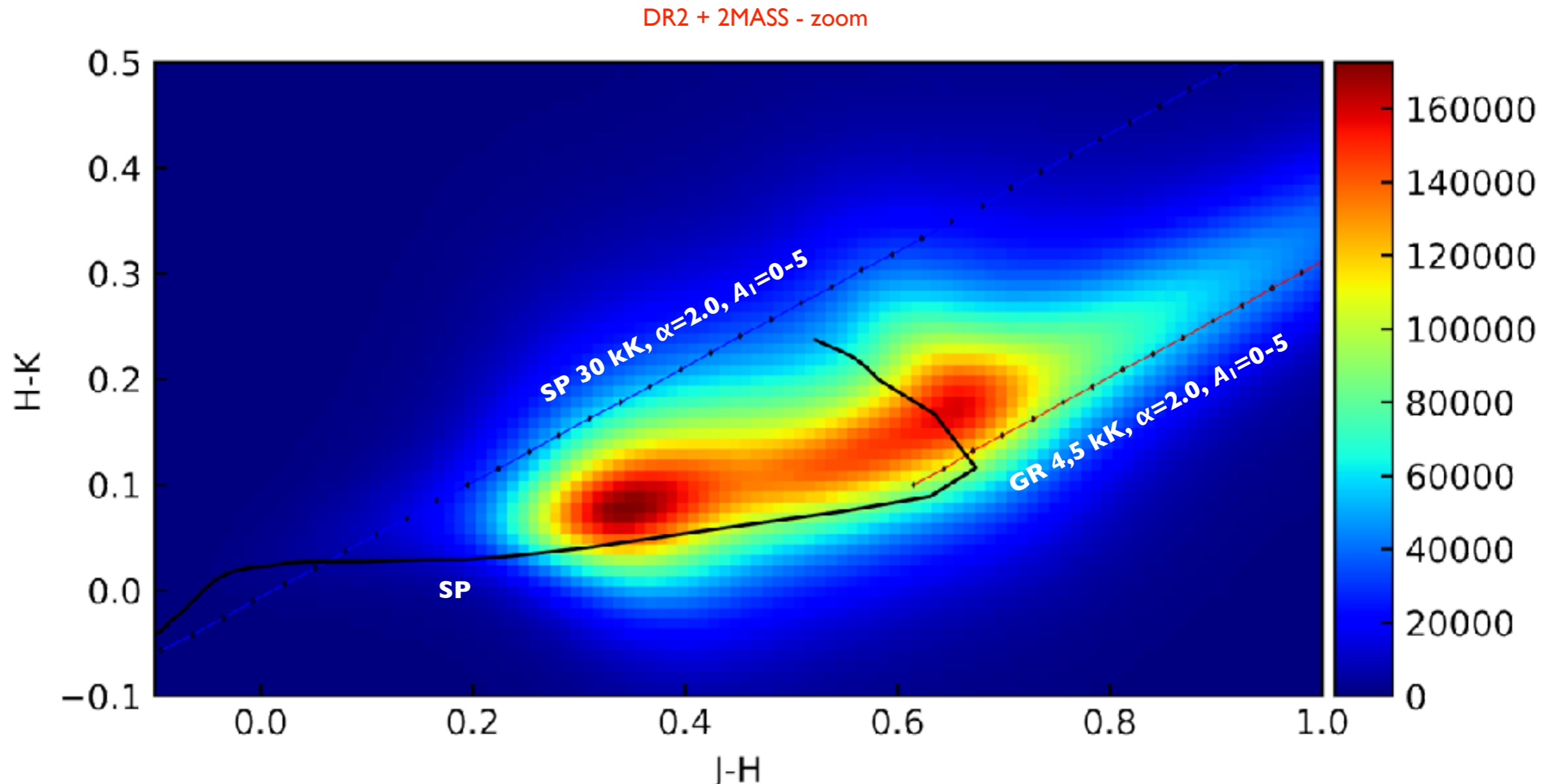
El plano $J-H$ + $H-K$



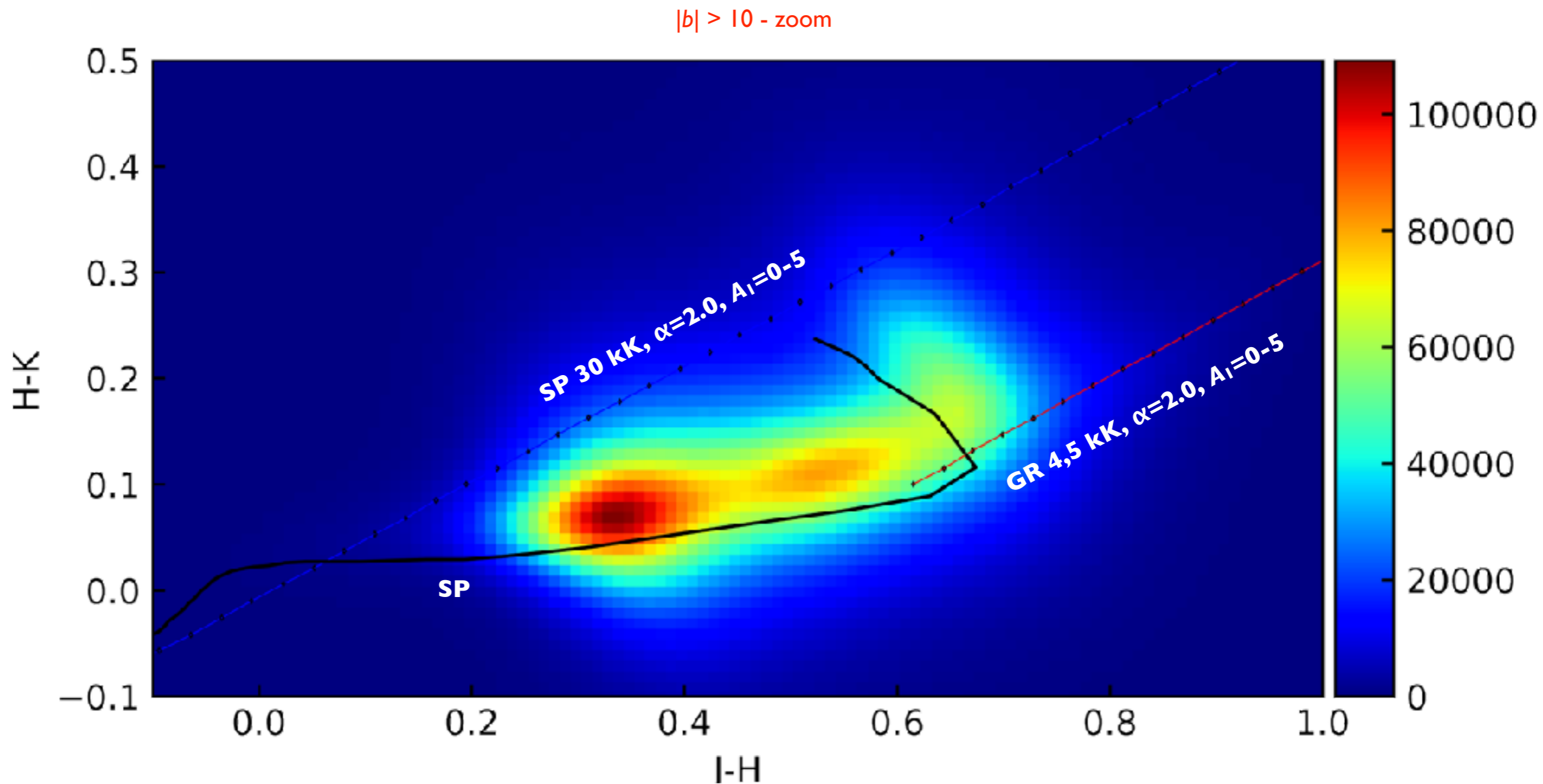
El plano $J-H$ + $H-K$



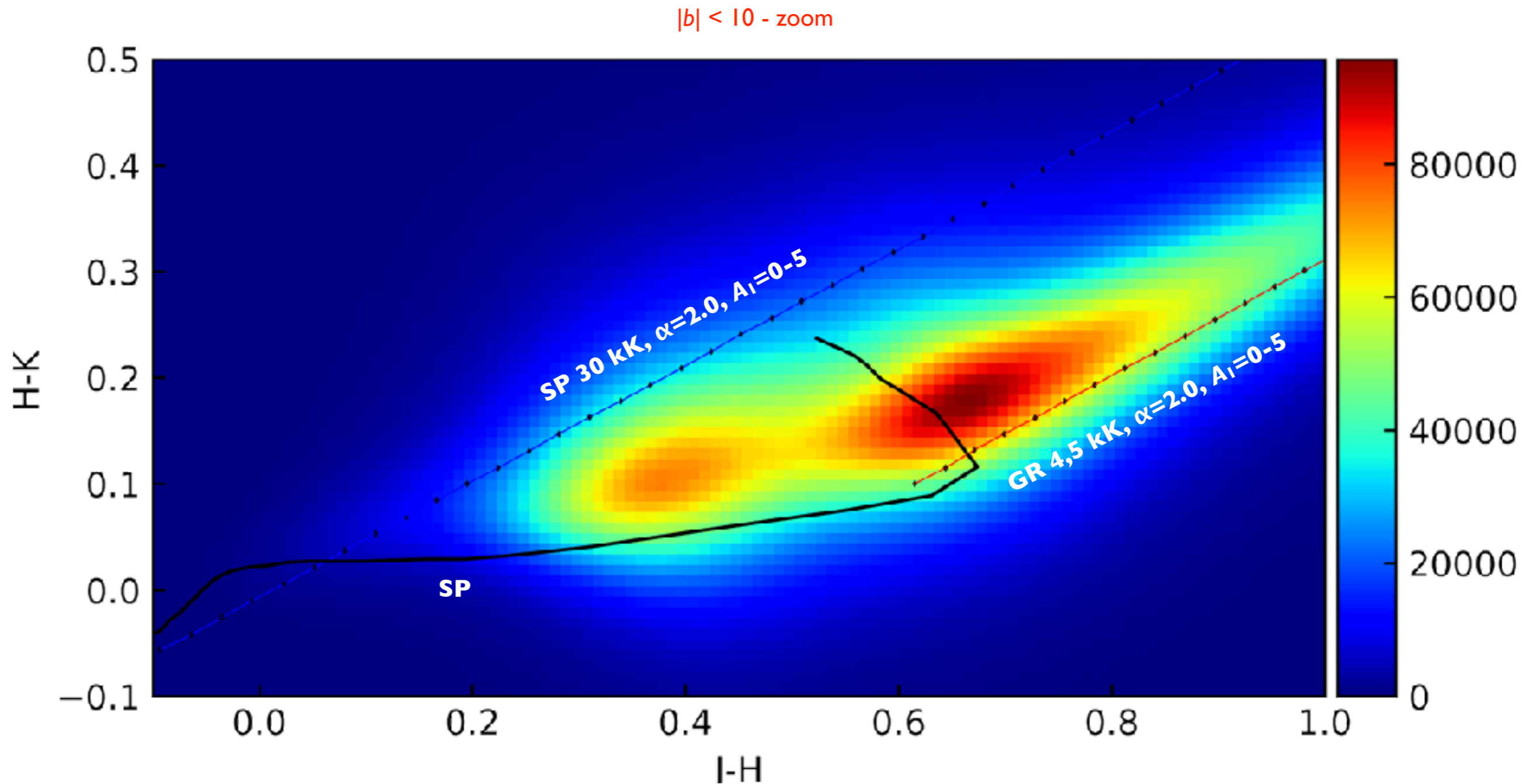
El plano $J-H$ + $H-K$



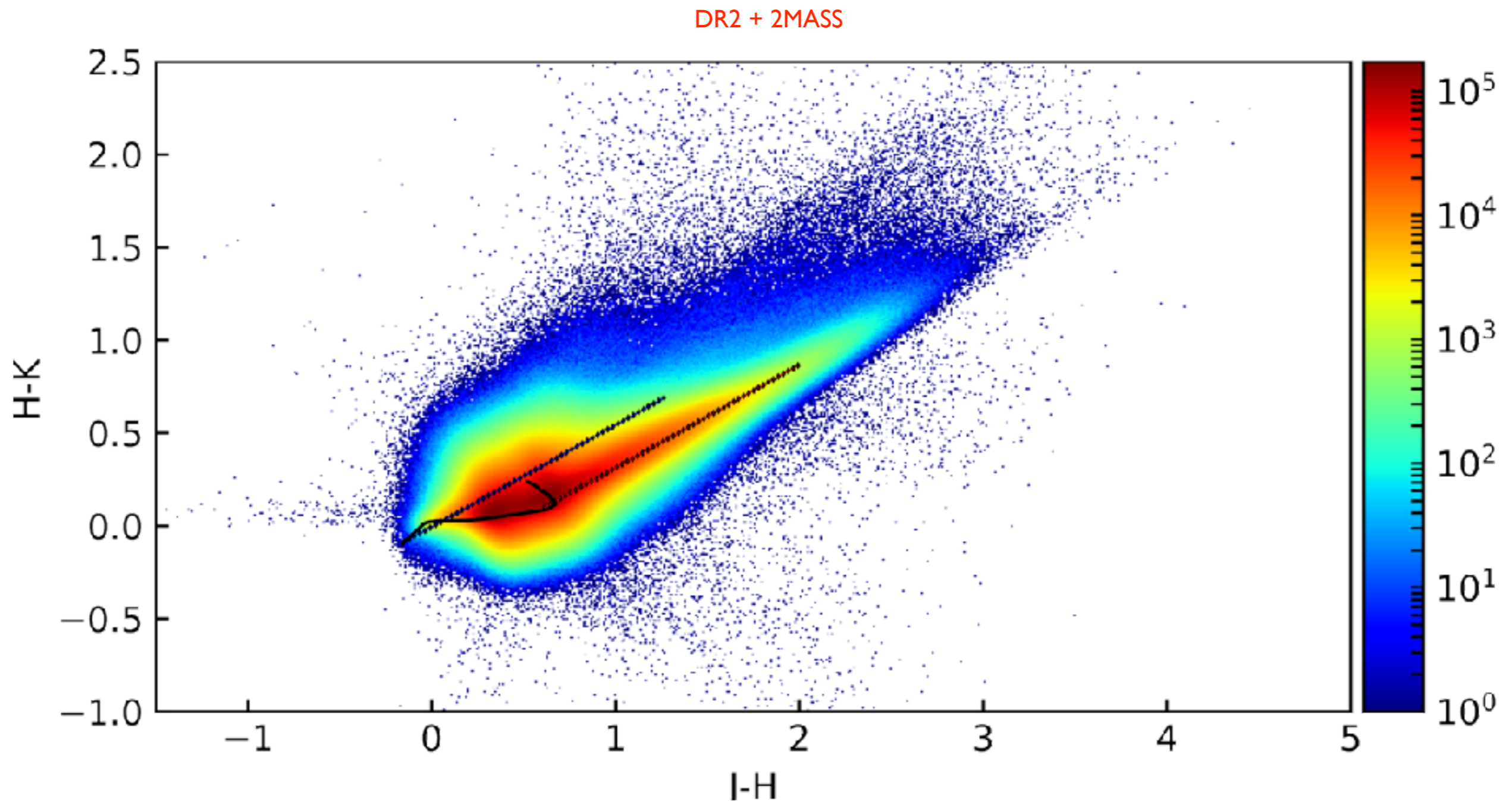
El plano $J-H$ + $H-K$



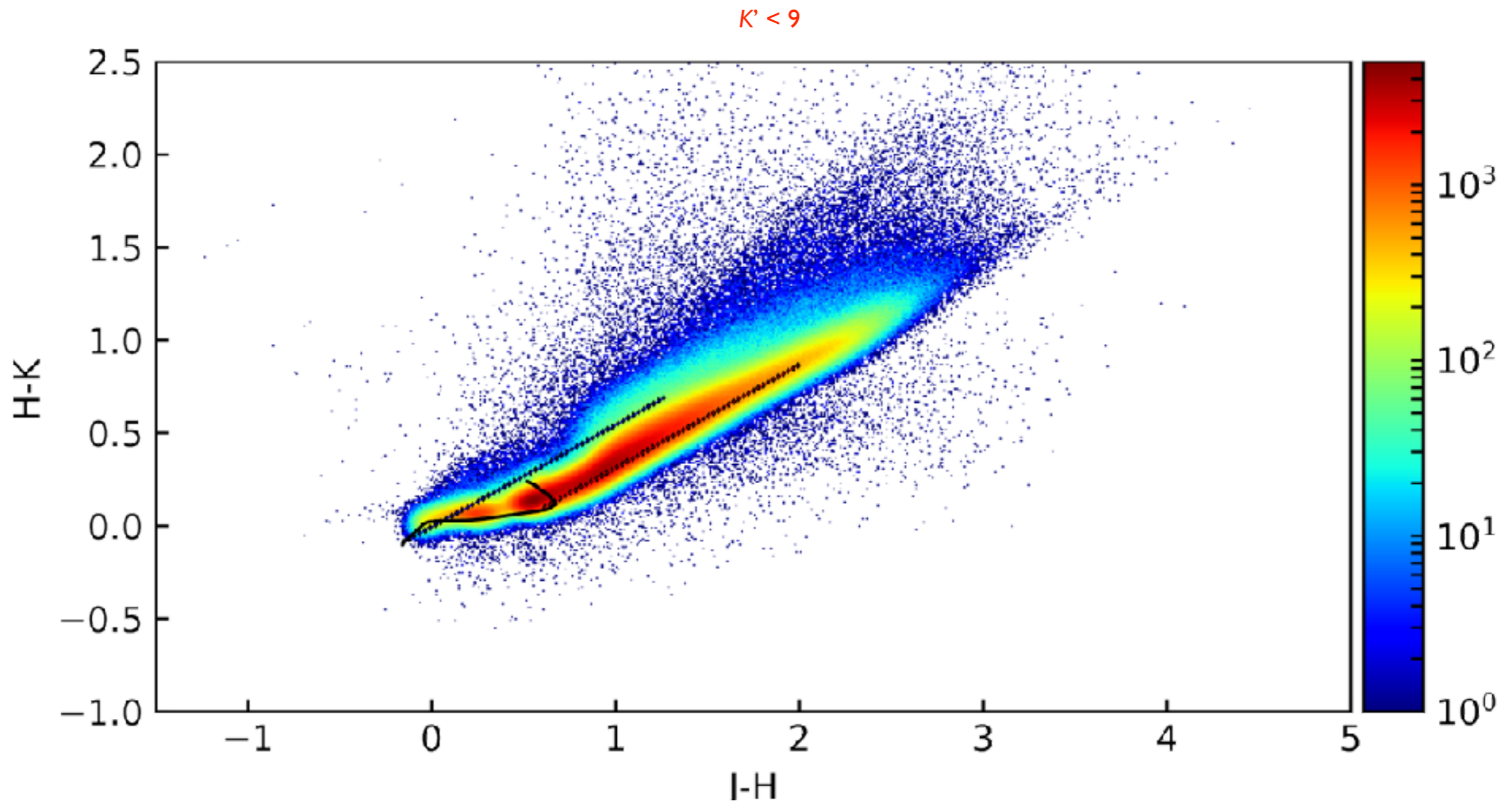
El plano $J-H$ + $H-K$



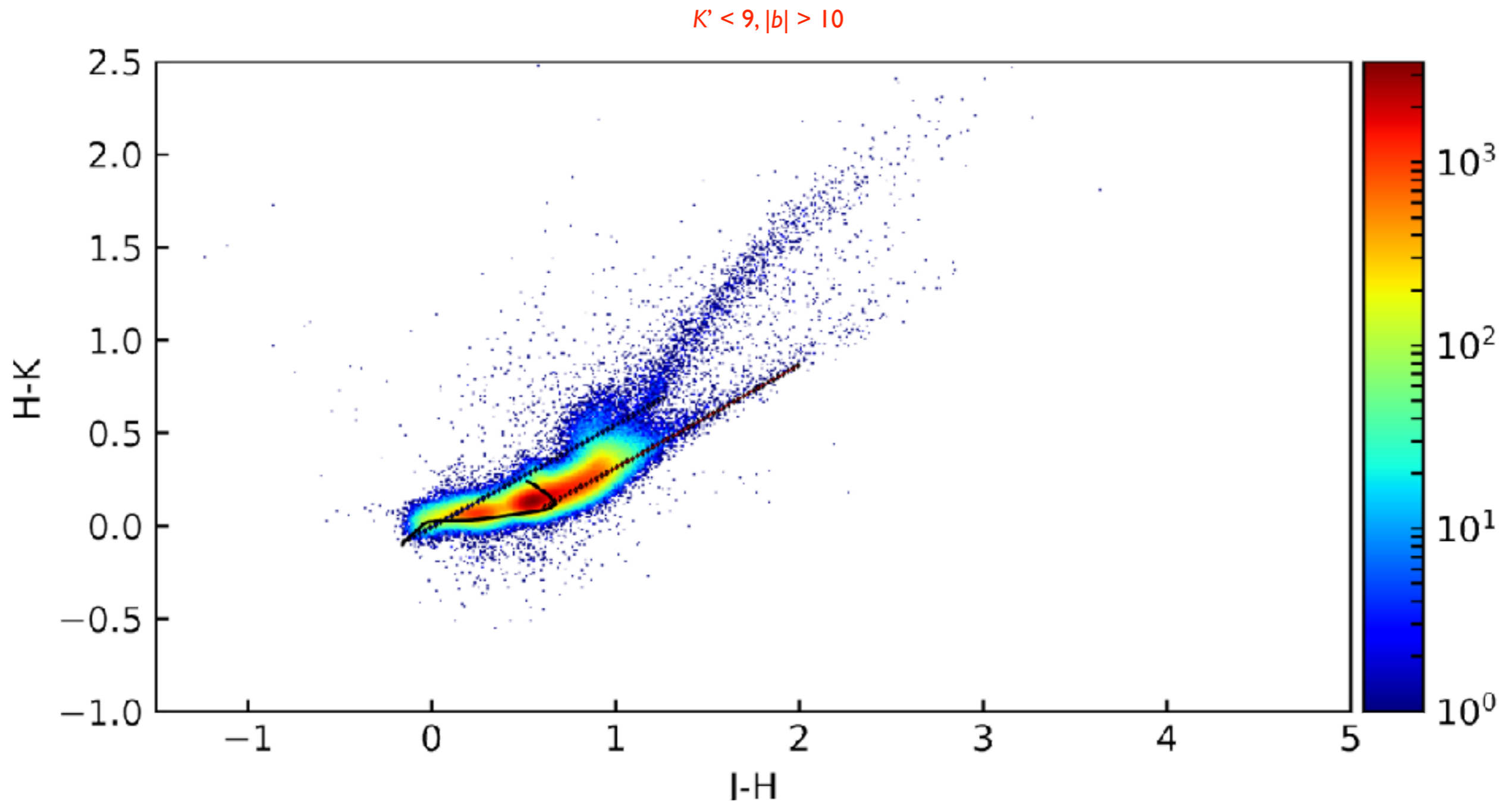
El plano $J-H$ + $H-K$



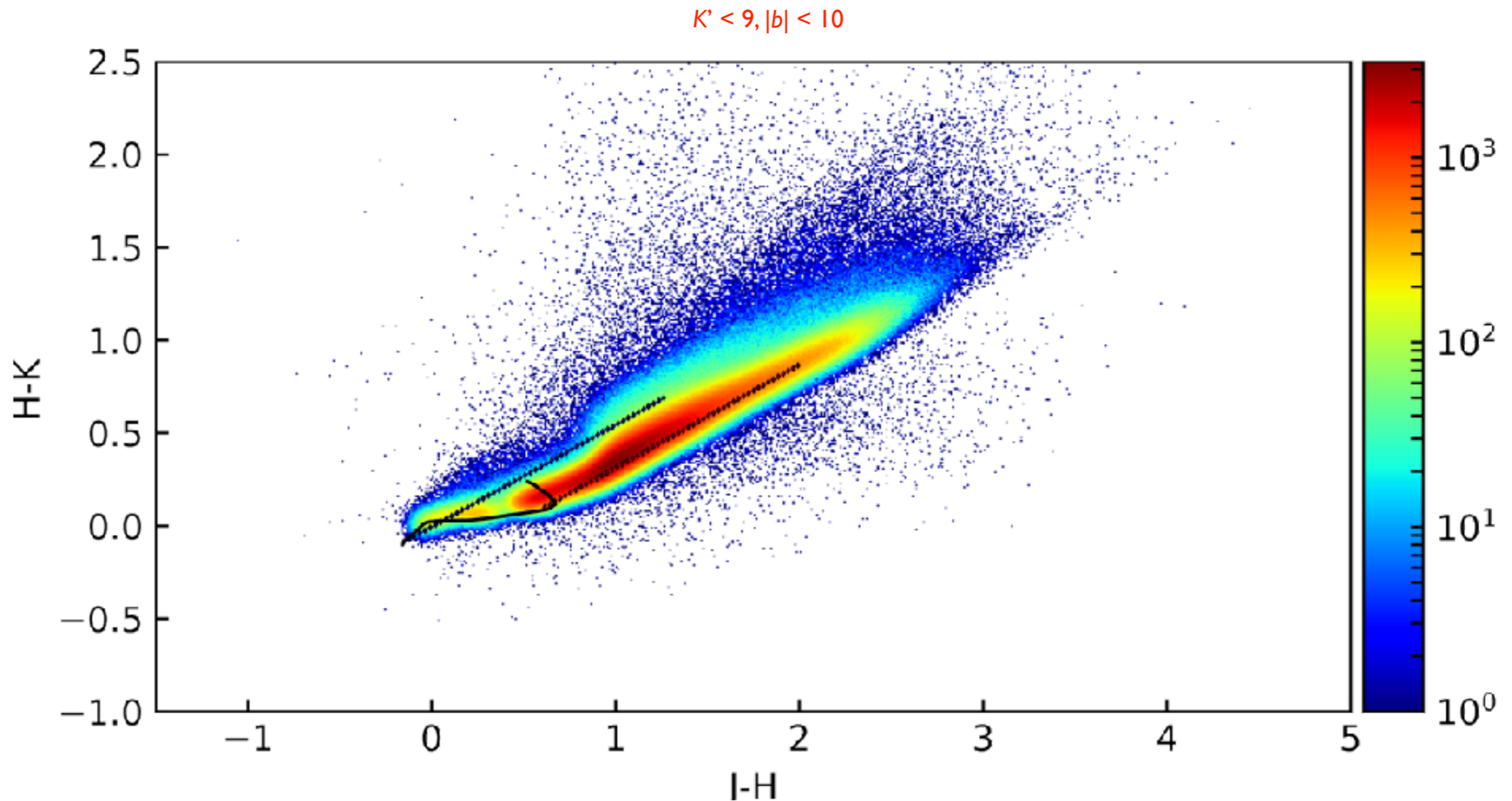
El plano $J-H$ + $H-K$



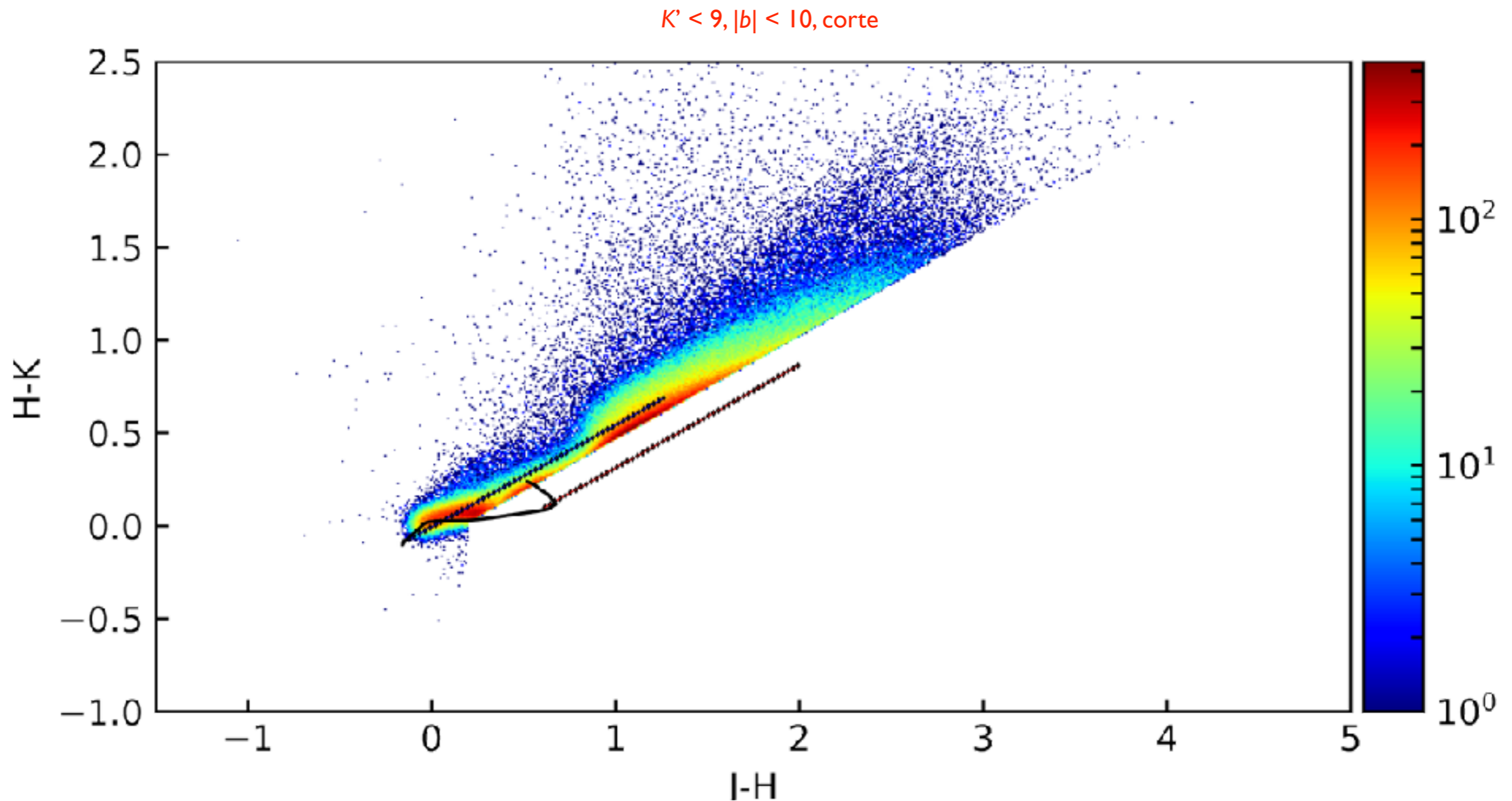
El plano $J-H$ + $H-K$



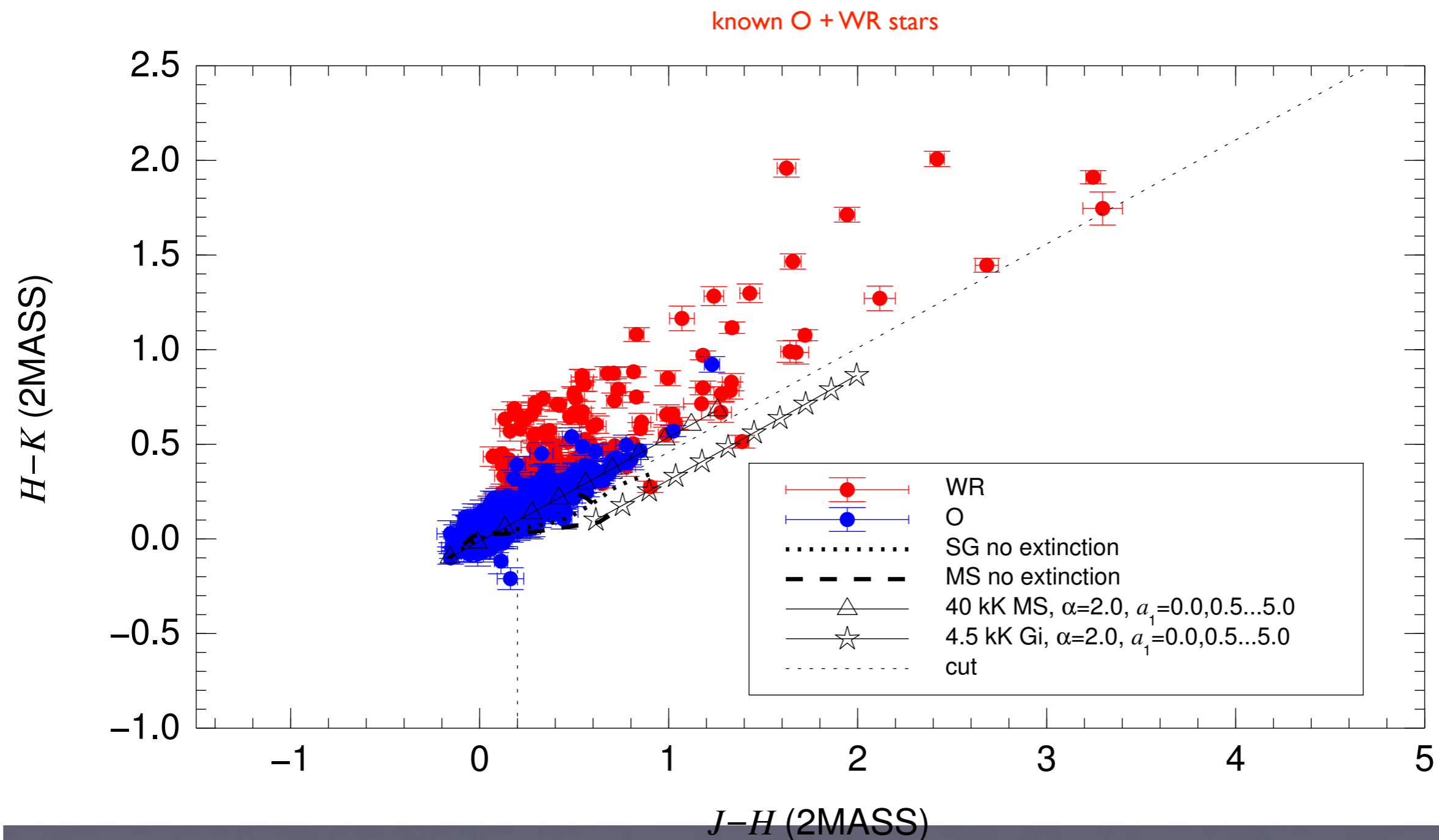
El plano $J-H$ + $H-K$



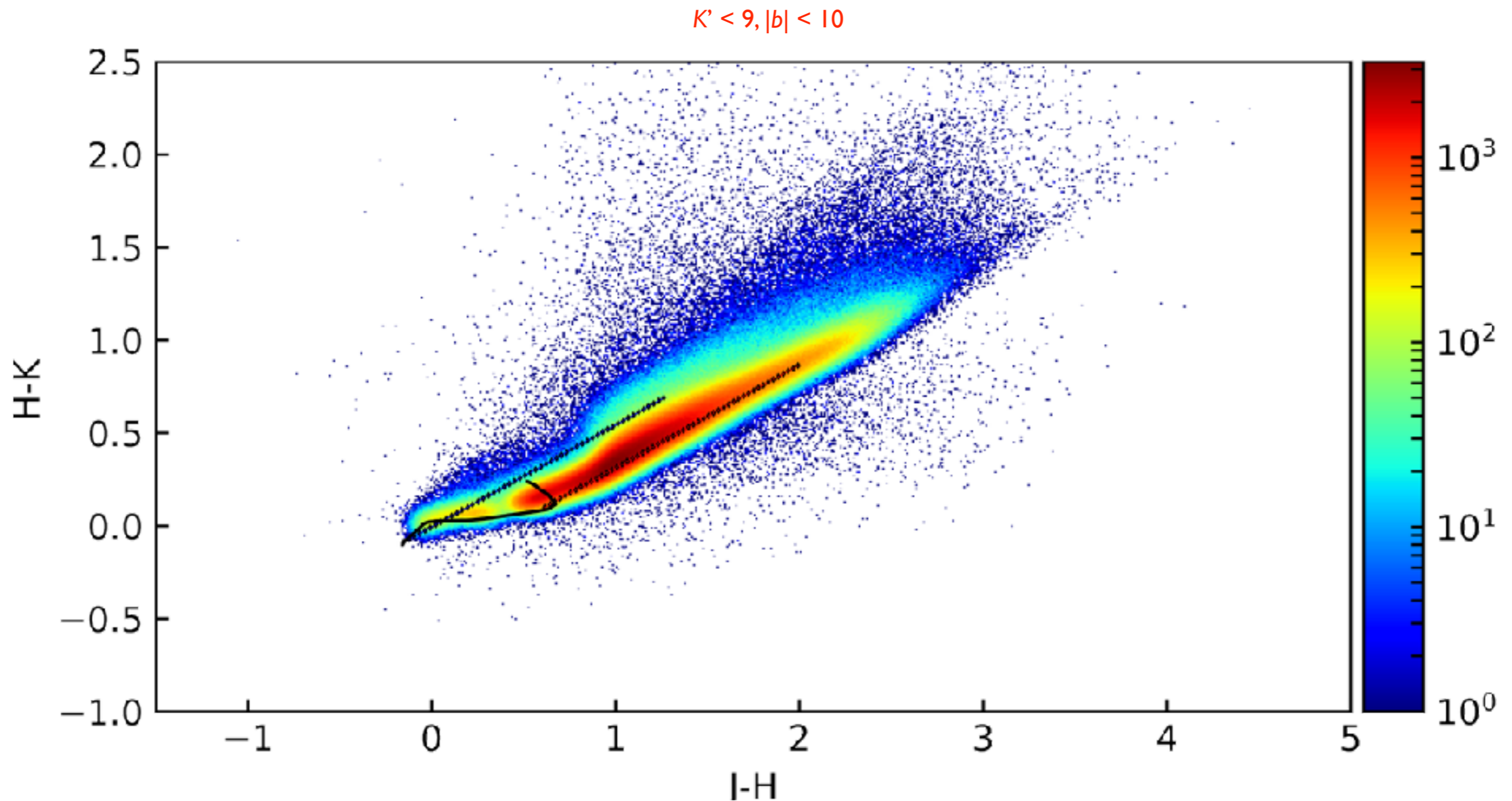
El plano $J-H$ + $H-K$



El plano $J-H$ + $H-K$

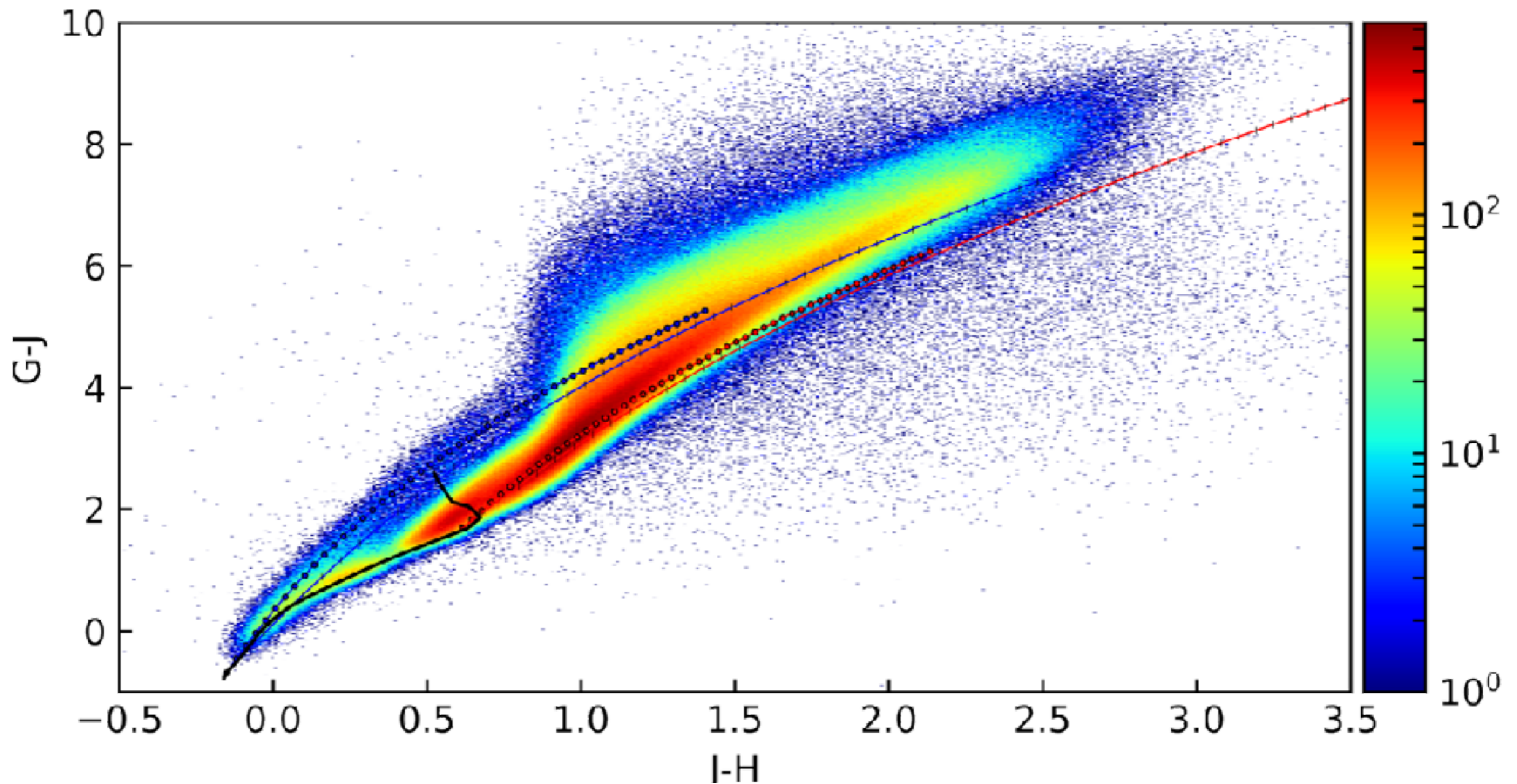


El plano $J-H$ + $H-K$



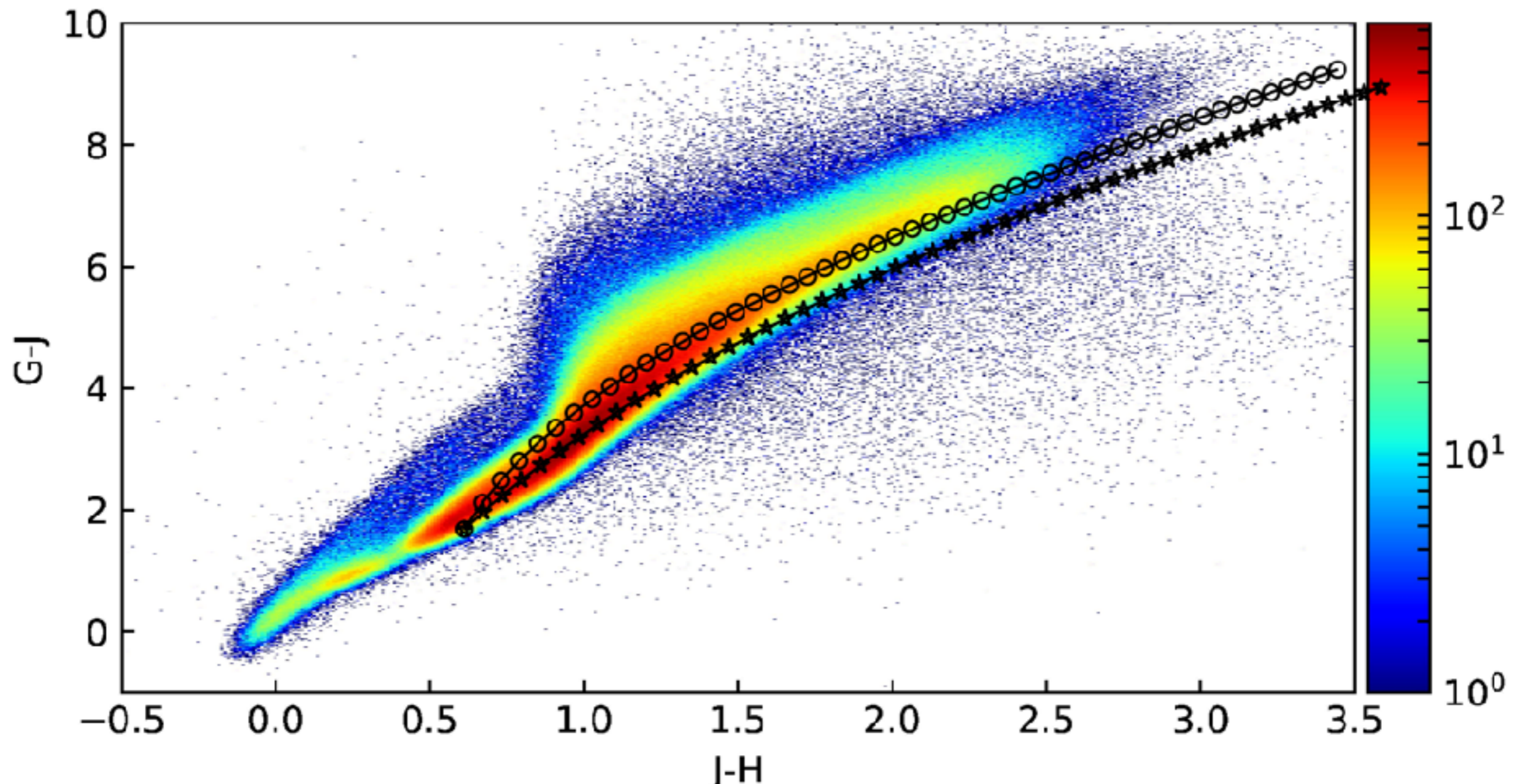
El plano $J-H$ + $G-J$

$K' < 9, |b| < 10$

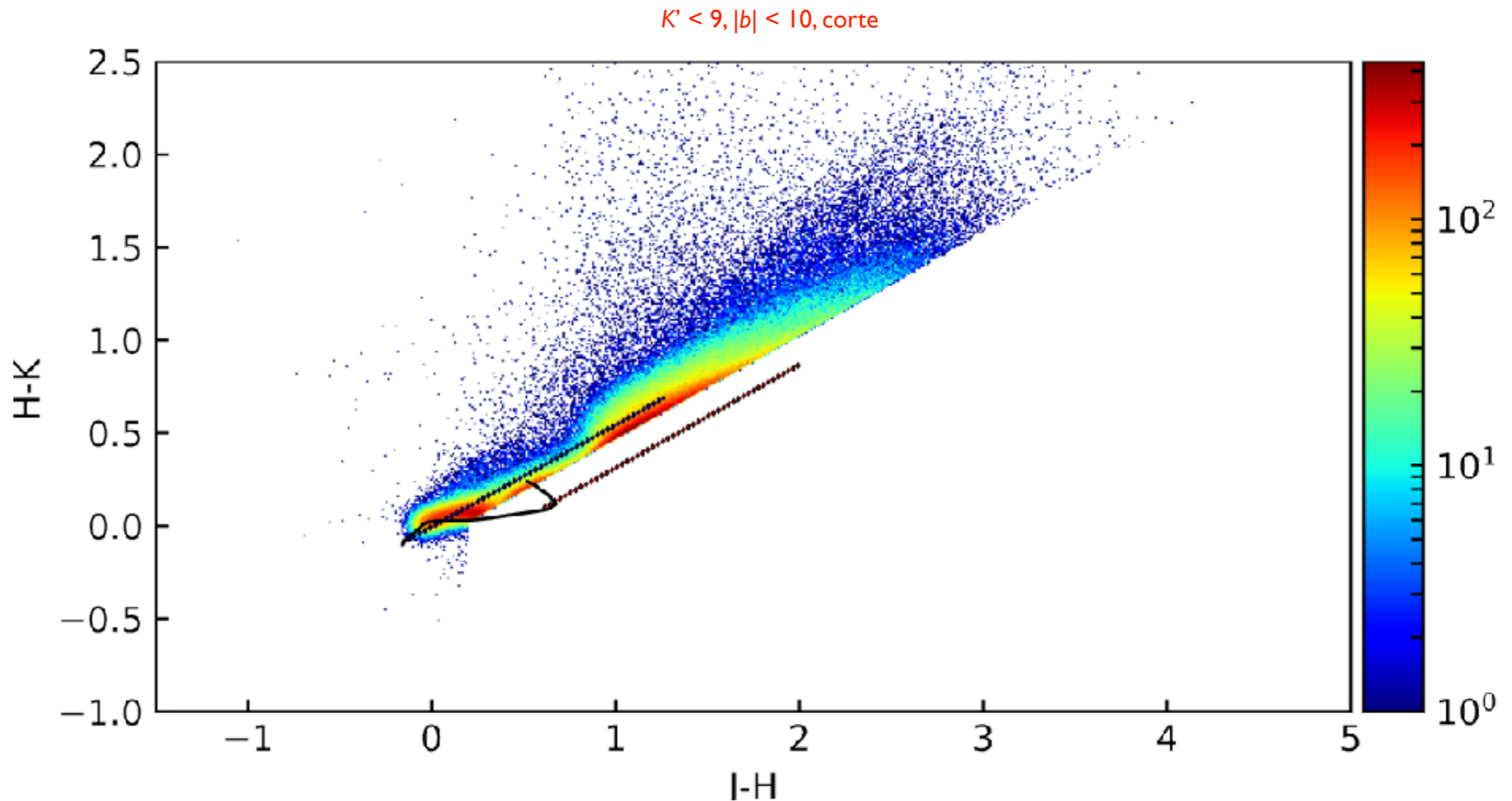


El plano $J-H$ + $G-J$

$K' < 9, |b| < 10$

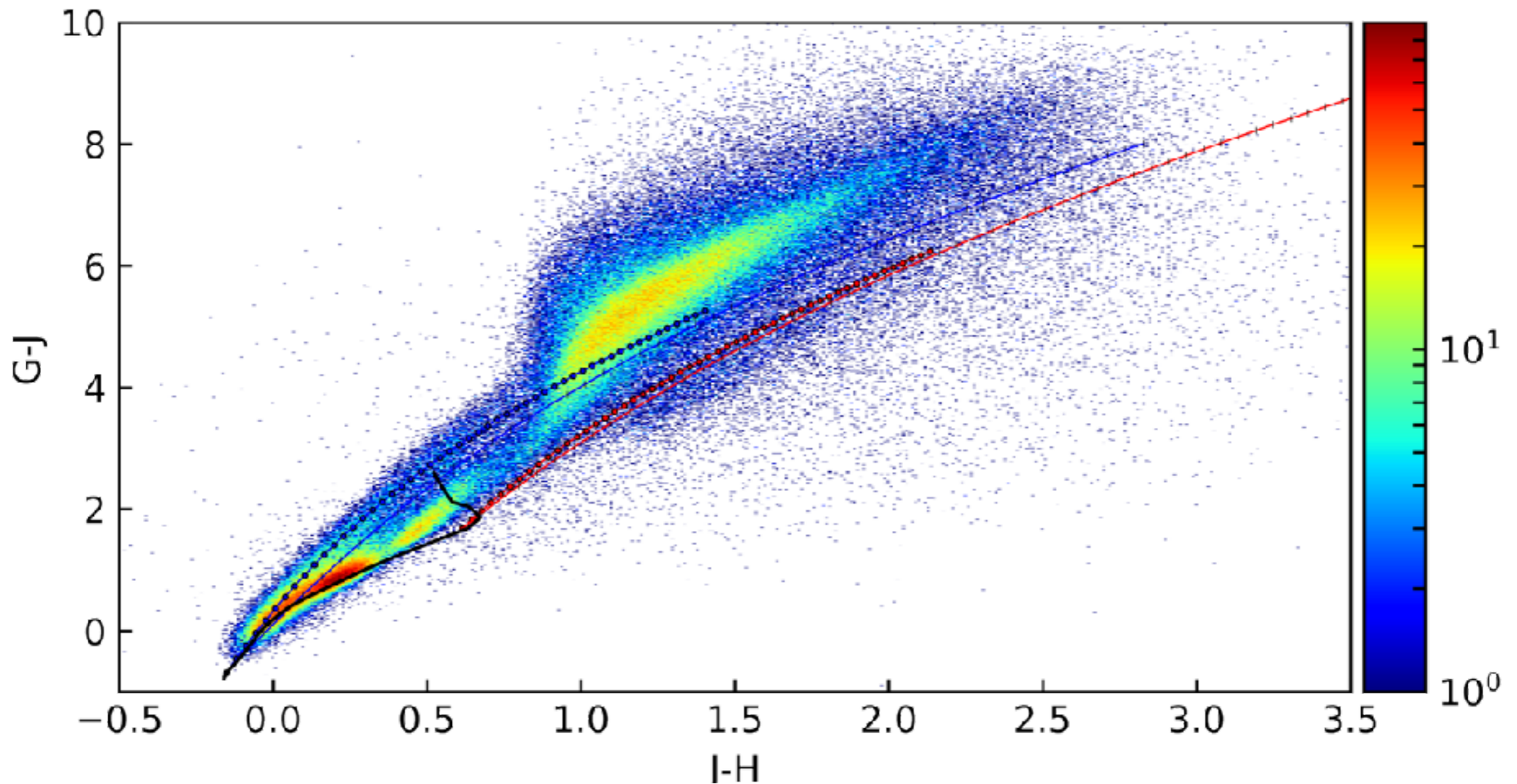


El plano $J-H$ + $H-K$

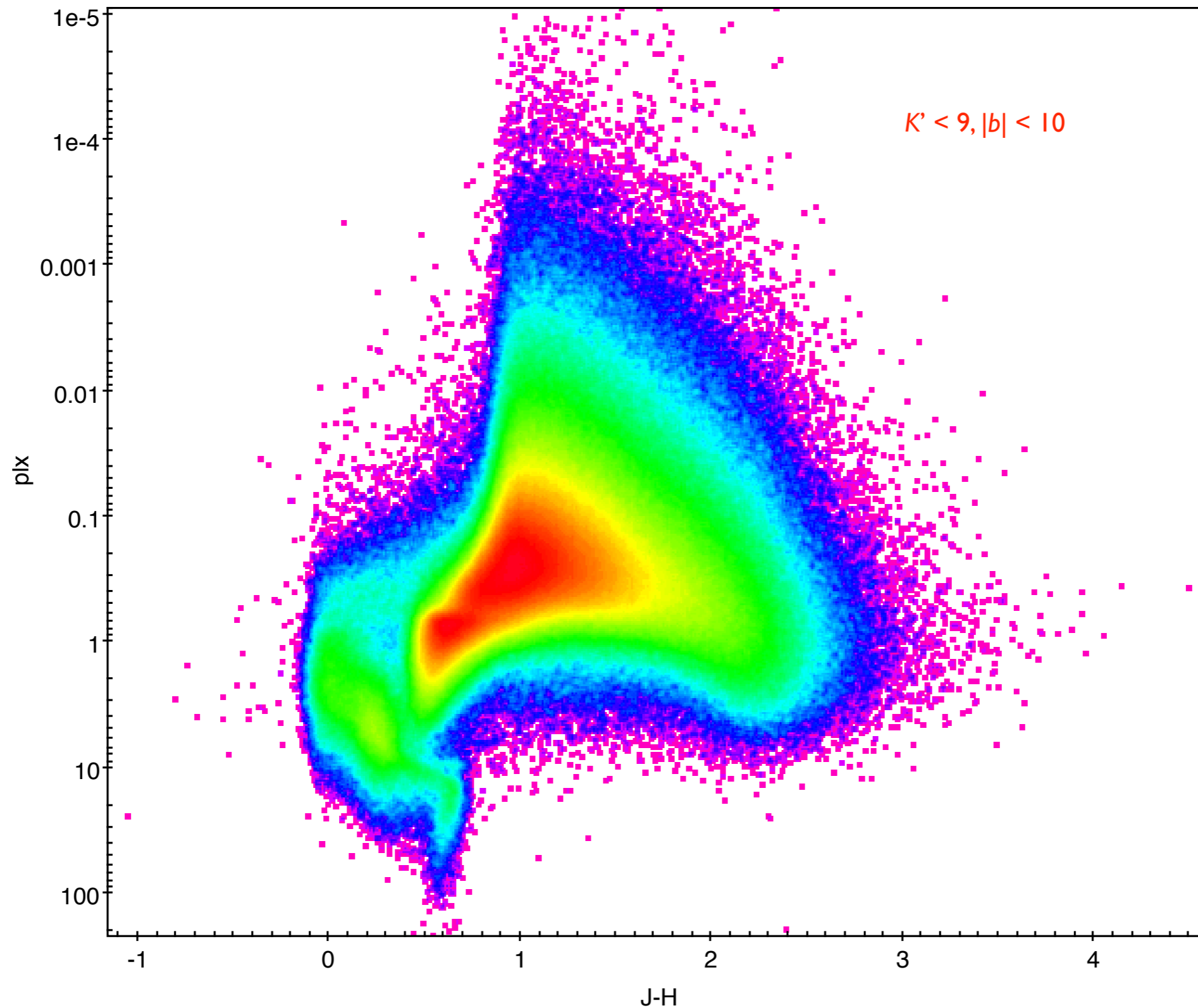


El plano $J-H$ + $G-J$

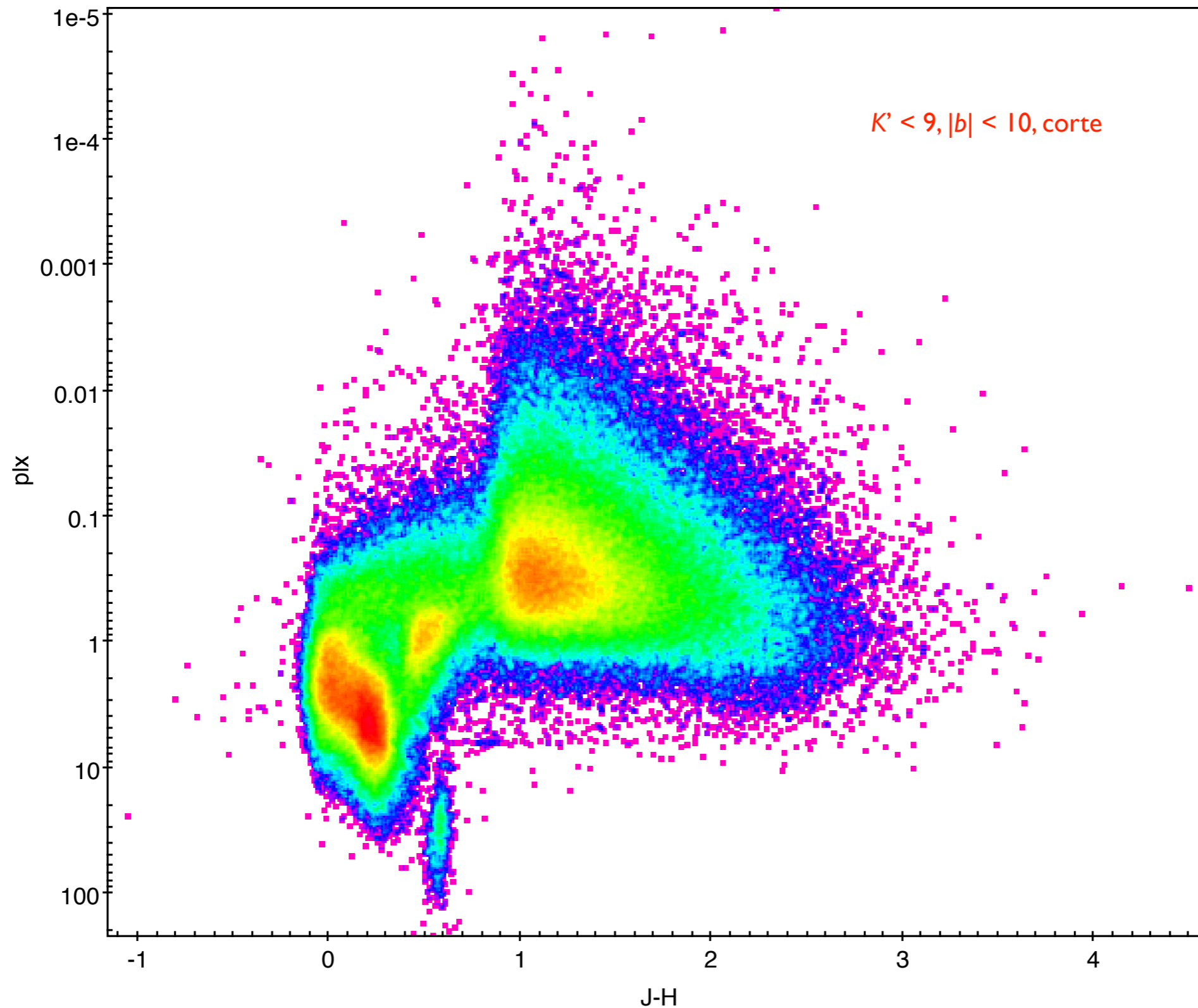
$K' < 9, |b| < 10$, corte



El plano $J-H$ + paralaje



El plano $J-H$ + paralaje



La Galaxia en vídeo



El plano $J-H$ + paralaje

