

Chemical Abundances in intermediate-age/old Open Clusters from the North

Ricardo Carrera

Instituto de Astrofísica de Canarias (Spain)
Departamento de Astrofísica, Universidad de La Laguna (Spain)

March 21st, 2012



Collaborators

C. Allende-Prieto, A. Aparicio, C. Gallart

Instituto de Astrofísica de Canarias (Spain)

Departamento de Astrofísica, Universidad de La Laguna (Spain)

L. Balaguer-Nuñez, C. Jordi

Universitat de Barcelona (Spain)

E. Pancino

Osservatorio Astronomico di Bologna (Italy)

A. Recio-Blanco

Observatoire de la Côte d'Azur (France)



Open clusters as Tracers of the Galactic Disk

Pros:

- Coeval groups of stars.
- Located at the same distance.
- Homogeneous chemical composition.

Cons:

- ~ 2100 Known Open Clusters in the Milky Way.
- Ages for ~70% (mainly from isochrone fitting).
- Metallicities for ~9%, mainly from Washington/Strömberg photometry, or low-resolution spectroscopy.
- Chemical abundances from high-resolution spectroscopy only for 89 systems, but in a heterogeneous way and in most cases only for [Fe/H].



Open clusters as Tracers of the Galactic Disk

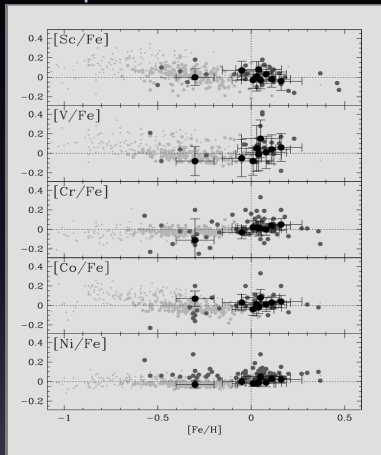
What OC tell us about the Galactic Disk?

- Chemical patterns in the Galactic disk.
- Trends with radius, height or age: gradients.
- Identification of stellar populations: thin/thick disks.
- Mix of stellar populations: importance of radial migration.

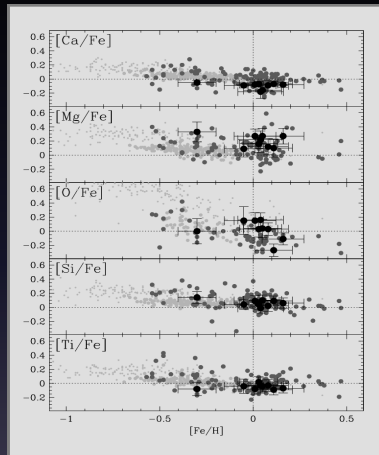


Chemical Patterns in the Galactic Disk

Fe-peak elements



α -elements



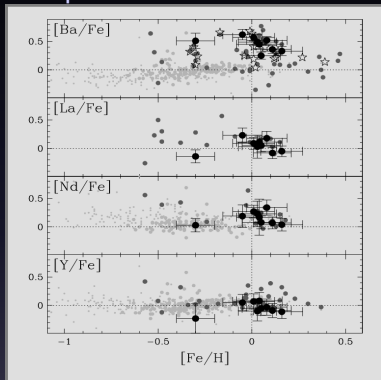
- Thin disk: Reddy et al. 2003
- Thick disk: Reddy et al. 2006
- Open Clusters: Literature
- Open Clusters: Carrera & Pancino 2011

Carrera & Pancino 2011

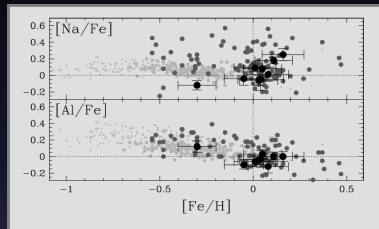


Chemical Patterns in the Galactic Disk

s-process elements



Na & Al



- Thin disk: Reddy et al. 2003
- Thick disk: Reddy et al. 2006
- Open Clusters: Literature
- Open Clusters: Carrera & Pancino 2011
- ☆ Open Clusters: D'Orazi et al. 2009



Open clusters as Tracers of the Galactic Disk

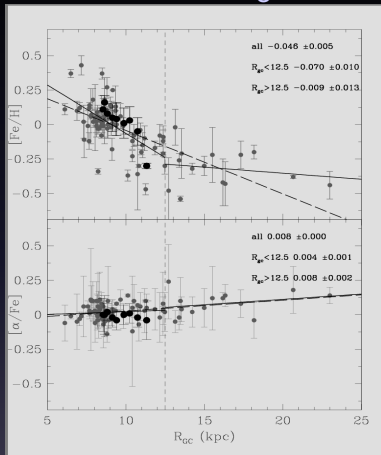
What OC tell us about the Galactic Disk?

- Chemical patterns in the Galactic disk.
- Trends with radius, height or age: gradients.
- Identification of stellar populations: thin/thick disks.
- Mix of stellar populations: importance of radial migration.

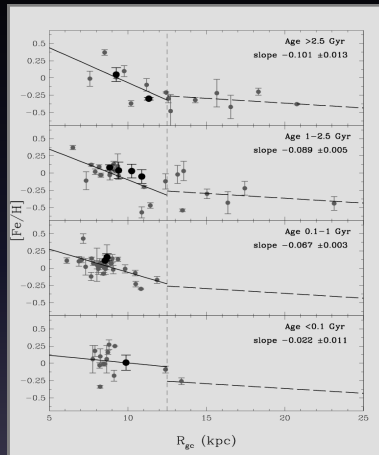


Existence of Trends in the Galactic Disk.

Existence of radial gradients



and its evolution with time

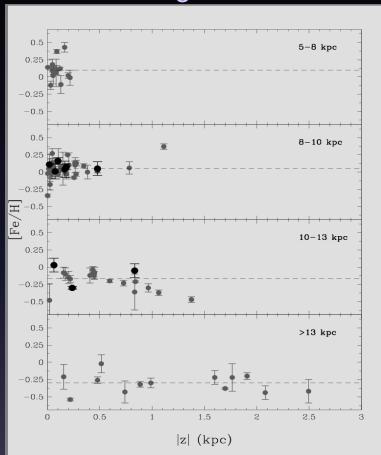


- Open Clusters: Literature
- Open Clusters: Carrera & Pancino 2011

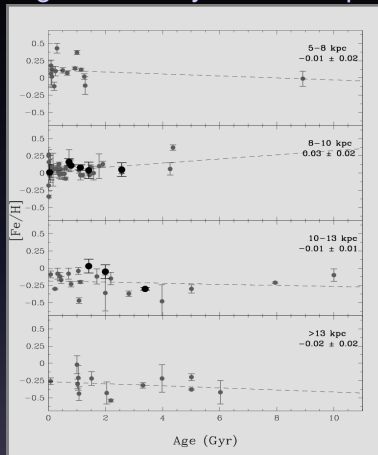


Existence of Trends in the Galactic Disk.

Vertical gradients



Age-metallicity relationship



- Open Clusters: Literature
- Open Clusters: Carrera & Pancino 2011

Carrera & Pancino 2011



Open clusters as Tracers of the Galactic Disk

What OC tell us about the Galactic Disk?

- Chemical patterns in the Galactic disk.
- Trends with radius, height or age: gradients.
- Identification of stellar populations: thin/thick disks.
- Mix of stellar populations: importance of radial migration.



Open clusters as Tracers of the Galactic Disk

What OC tell us about the Galactic Disk?

- Chemical patterns in the Galactic disk.
- Trends with radius, height or age: gradients.
- Identification of stellar populations: thin/thick disks.
- Mix of stellar populations: importance of radial migration.

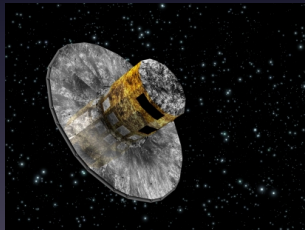
NGC 6791



The Gaia mission

Gaia products

- Parallaxes and distances: precision 2% within 1.5 kpc.
- Proper motions and tangential velocities: 0.23 km s^{-1} .
- Radial velocities: $G_{RVS} < 17$ (1 km s^{-1} @ $G_{RVS} < 14$; 15 km s^{-1} @ $G_{RVS} \sim 17$).
- Chemical abundances: $G_{RVS} < 12$.



The Gaia-ESO survey

240 nights in the next 4 years plus 60 nights in the 5th

Giraffe

- 130 fibers; $V < 19$; $R \sim 1600-2500$.
- Radial velocities (uncertainty $\sim 15 \text{ km s}^{-1}$ in the worse cases).
- Atmospheric parameters (T_{eff} , $\log g$).
- Chemical abundances for Fe, Ca, Mg (precision 0.2 dex).

UVES

- 6(+2) fibers; $V < 16.5$; $R \sim 4700$.
- Multi-element chemical abundances (accuracy 0.1 dex).

It will observe 30–50 Open clusters



The Gaia-ESO survey

240 nights in the next 4 years plus 60 nights in the 5th

Giraffe

- 130 fibers; $V < 19$; $R \sim 1600-2500$.
- Radial velocities (uncertainty $\sim 15 \text{ km s}^{-1}$ in the worse cases).
- Atmospheric parameters (T_{eff} , $\log g$).
- Chemical abundances for Fe, Ca, Mg (precision 0.2 dex).

But limited to $\delta < +20^\circ$

UVES

- 6(+2) fibers; $V < 16.5$; $R \sim 4700$.
- Multi-element chemical abundances (accuracy 0.1 dex).

It will observe 30–50 Open clusters



The Gaia-ESO survey

Why are Northern Open Clusters also important?

- Interesting clusters only observable from the North:
 - Berkeley 17 (the oldest)
 - NGC 6791 (the most metal-rich)
- Directions in the Galactic disk only observable from the North:
 - the Galactic anticenter



The Gaia-ESO survey

Why are Northern Open Clusters also important?

- Interesting clusters only observable from the North:
 - Berkeley 17 (the oldest)
 - NGC 6791 (the most metal-rich)
- Directions in the Galactic disk only observable from the North:
 - the Galactic anticenter

Problems

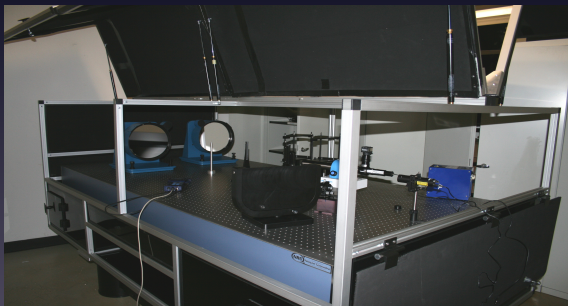
- There is not an instrument with similar capabilities than FLAMES, even in 2-4m class telescopes.
- This is particularly true for Giraffe (WEAVE will not be ready before 2016).
- A handful of instruments have similar features than UVES but they can observe only one target in each exposure: SARG, CAFE.



Open Clusters Chemical Abundances from the North

CAFE features

- Spectral range: 3900-9600Å (similar to UVES).
- Spectral resolution: ~ 45000 (similar to UVES).
- Limited to brightest targets $V < 15$ ($V < 16.5$ for UVES).
- Only one target in each exposure.

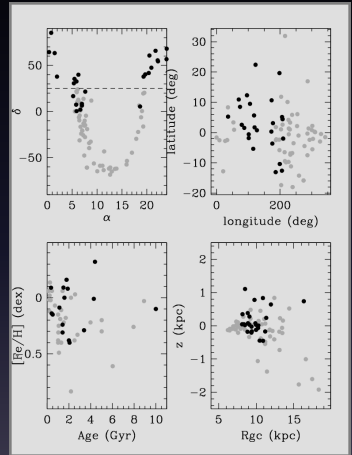


Open Clusters Chemical Abundances from the North

We will follow a similar strategy than in the Gaia-ESO Survey

Strategy

- 20 Clusters older than ~ 0.5 Gyr (form a red-clump).



● GES targets
● Northern targets

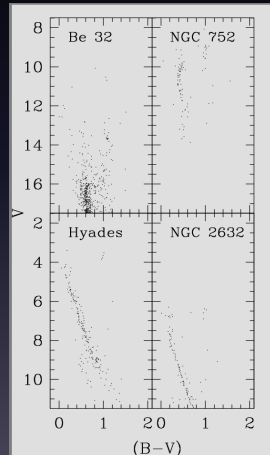


Open Clusters Chemical Abundances from the North

We will follow a similar strategy than in the Gaia–ESO Survey

Strategy

- 20 Clusters older than ~ 0.5 Gyr (form a red-clump).
- 6 or more red-clump in each cluster (easily identified in the sparsest color-magnitude diagrams).

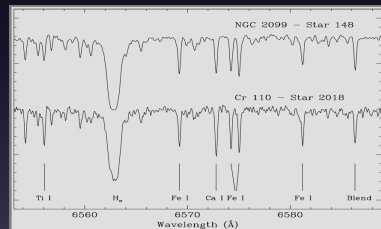


Open Clusters Chemical Abundances from the North

We will follow a similar strategy than in the Gaia–ESO Survey

Strategy

- 20 Clusters older than ~ 0.5 Gyr (form a red-clump).
- 6 or more red-clump in each cluster (easily identified in the sparsest color-magnitude diagrams).
- Less line-crowded and easier to analyse than brighter giants.



Open Clusters Chemical Abundances from the North

Methods to derive chemical abundances.

- **DAOSPEC+GALA** Classical method based on EW.
Stetson & Pancino (2008); Carrera & Pancino (2011); Mucciarelli et al. (in prep.)
- **MATISSE & DEGAS** Compare the observed spectrum to a grid of synthetic spectra.
Kordopatis et al. (2011); Recio-Blanco et al. (2006)
- **FERRE** Interpolate in a grid of synthetic spectra and compare them with the observed spectrum.
Allende-Prieto et al. (2006)

They will be also used by Gaia-ESO Survey.



Summary

- Open clusters are key particles to study the formation and evolution of the Galactic disk: i.e. chemical patterns; radial gradients, etc.
- The heterogeneity of available data forces us to be extremely cautious when drawing any conclusion.
- This picture is going to change in the next years with Gaia mission (parallaxes and proper motions) and the Gaia-ESO Survey (radial velocities and chemical abundances).
- However, the Gaia-ESO Survey does not cover most of the North Hemisphere including some interesting clusters (i.e. Berkeley 17 or NGC 6791) and regions (i.e. the Galactic anticenter).
- We propose to obtain chemical abundances using CAFE@CAHA 2.2m capabilities to derive chemical abundances in northern Open Clusters older than 0.5 Gyr in the same way by the Gaia-ESO Survey.

